



Meridian
Trust



Stratton
School

New Student Booklet 2026



Adlam



Chandler



Franklin



Turing



Matt King
Sixth Form



Dear Student,

On behalf of the entire Stratton School community, I am delighted to welcome you to our school. Here is a welcome message https://youtu.be/zz64q-n_XC0

At Stratton School, our identity is built on a foundation of academic success, creativity, and a strong sense of community. We value diversity and are committed to creating a welcoming and inclusive environment where every student can flourish and reach their full potential. We belong at Stratton School, where every individual is known, valued, and supported.

As you begin this new chapter in your educational journey, I encourage you to embrace the many opportunities ahead of you, not only in the classroom, but also through extracurricular activities, enrichment programmes, and community events. Our dedicated team of teachers and support staff are here to guide you, challenge you, and help you grow in both your academic learning and personal development. I look forward to getting to know each of you and working together to ensure that Stratton becomes a place where you can learn, succeed, and create lasting memories.

We hope this information helps you enjoy a smooth and confident transition to secondary school. Starting a new school can bring a mix of emotions: excitement for the next stage of your journey, alongside understandable nerves about change and new routines. That is exactly why we have created this booklet—to walk you through the key things you need to know before joining us. You are not expected to remember everything right away; think of this as your handy guide that you can return to whenever you need it.

We very much look forward to welcoming you to Stratton School.

Sam Farmer

Principal

We belong at Stratton where every individual is known, valued, and supported.



Be Kind

Be Engaged

Be Ambitious

Our Pastoral Leadership

Mr Crisford	Adlam House Senior Tutor	Mr Crisford is responsible for the progress, behaviour and attainment of students in Adlam house. Mr Crisford is a history teacher and was a company director before becoming a teacher.
Miss Leach	Franklin House Senior Tutor	Miss Leach is the senior tutor for Franklin house. This means she is responsible for behaviour, progress and attainment for all Franklin students. Miss Leach is an English and Media teacher and loves traditional archery and listening to audio books in the garden.
Miss Hunstone	Chaundler House Senior Tutor	Miss Hunstone is responsible for the progress, behaviour and attainment of students in Chaundler House. Miss Hunstone is a teacher of Modern Foreign Languages and has studied, lived and worked in Switzerland and France.
Mr York	Turing House Senior Tutor	Mr York is responsible for the progress, behaviour and attainment of students in Turing house. Mr York is a maths teacher. He used to be a policeman before becoming a teacher and is an excellent golfer!
Miss Leeks	Adlam House Student Support Assistant	Miss Leeks offers pastoral support for Adlam House students and is responsible for supporting all aspects of life for our Adlam students, including attendance. Miss Leeks worked in wholesale News distribution before joining Stratton.
Mrs Feeney	Franklin House Student Support Assistant	Mrs Feeney has worked as a member of support staff in schools for the past 14 years. She moved from Biggleswade Academy to Stratton to work in the SEND Department and is now an SSA. Mrs Feeney previously worked for Chartered Accountants.
Mrs Clancy	Chaundler House Student Support Assistant	Mrs Clancy has worked at Stratton since 2005 as a member of the support team. She is the Student Support Assistant for Chaundler House (SSA). She lived in Germany for 16 years working for the Royal Air Force. Both her children were born in Germany and attended Stratton, so she understands school from both sides of the table.
Mrs Butler Smith	Turing House Student Support Assistant	Mrs Butler-Smith is our SSA for Turing House. She has returned to Stratton after spending time in a SEMH specialist provision. We are really pleased to welcome Mrs Butler-Smith back to Stratton School in September.

Being Safe

Safeguardians Team

Designated Safeguarding Lead
Deputy Safeguarding Leads

Mrs J Langdon
Mrs A Schurek & Miss G Campbell

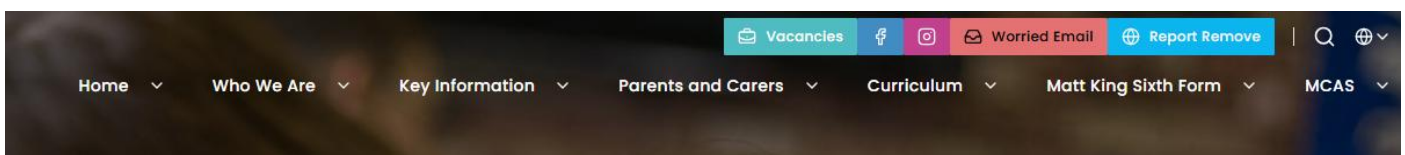
The Safeguardians are based in the Chaundler Corridor

If you are worried about something or someone, talk to us by:

- Speaking to **any** member of staff – all staff at Stratton School are trained to support students with concerns
- Going to your House Hub
- Logging a concern on Classroom Cloud, when you are using a school computer or laptop
- Emailing us worried@stratton.school

Our PSHE curriculum will cover all aspects of safety. It is really important that you feel safe in school, and we are here to help and support you with any concerns you may have.

If you are worried, we have additional resources on our website.



- A quick link to our worried email
- A direct link to Report Remove
- MCAS drop down, this will take you to your student log in portal.

Our House System



Adlam



Chaundler



Franklin



Turing

Stratton is divided into 4 main Houses of about 200 students. These are years 7 to 11. We have one dedicated 6th Form House as well. Our House system ensures that all students are provided with the support and guidance they need by their Tutor, Student Support Assistant and Senior Tutor on a day-to-day basis. Their individual progress is monitored closely.

Adlam (Humanities), named after Tom Edwin Adlam, Bedfordshire soldier who survived WW1 and WW2 and was awarded the Victoria Cross.

Chaundler, (English, Media and Foreign Languages), named after Christine Chaundler, prolific children's author from Biggleswade.

Franklin, (Science and Technology), named after Rosalind Franklin, Biophysicist whose work led to understanding the molecular structure of DNA.

Turing, (Mathematics, and Computing & Commerce), named after Alan Turing, WW2 code breaker and the influence behind the development of theoretical computer science.

The Matt King 6th Form (PE and Creative Arts), our 6th Form Has a house identity of its own. Matt King was an inspirational ex-student of Stratton who overcame exceptional challenges to achieve his aspirations. We are proud to name our post 16 provision in his honour.



Matt King
Sixth Form

A typical day?

Unlike at primary school, you will be taught in different classrooms and move from one classroom to the next for lessons and could be taught by five different teachers per day. You will be given an individual timetable which tells you all your lessons, which teacher it is with, and which classroom it is in. Typically, each teacher has their own classroom, and you must go to them for your lesson. It normally takes a few weeks to remember teachers' names and which subjects are taught where, but this is normal when you start secondary school. You will be taught 5 lessons a day, which last for an hour each. You will also have a Tutor Time everyday, as well as a break and lunch. The timings of the school day can be seen below. Students arrive on site from 8:30am every morning.

Year 7 + 9 + 11			
Start	Ends	Designation	Title/ Activity
8:40 AM	8:50 AM	Reg	AM Registration
8:50 AM	9:50 AM	P1	Period 1
9:50 AM	10:20 AM	Break	Break
10:20 AM	11:20 AM	P2	Period 2
11:20 AM	11:40 AM	Tutor	Tutor / PSHC
11:40 AM	12:40 PM	P3	Period 3
12:40 PM	1:10 PM	Lunch	Lunch
1:10 PM	2:10 PM	P4	Period 4
2:10 PM	3:10 PM	P5	Period 5
			End of School Day
3:10 PM	4:10 PM	P6	Period 6 Enrichment
Years 8 +10 + 6th Form			
Start	Ends	Designation	Title/ Activity
8:40 AM	8:50 AM	Reg	AM Registration
8:50 AM	9:50 AM	P1	Period 1
9:50 AM	10:50 AM	P2	Period 2
10:50 AM	11:20 AM	Break	Break
11:20 AM	11:40 AM	Tutor	Tutor / PSHC
11:40 AM	12:40 PM	P3	Period 3
12:40 PM	1:40 PM	P4	Period 4
1:40 PM	2:10 PM	Lunch	Lunch
2:10 PM	3:10 PM	P5	Period 5
			End of School Day
3:10 PM	4:10 PM	P6	Period 6 Enrichment

Addressing a member of staff

At Stratton School, we address staff as their Formal Name – Dr Andrews, Mrs Smith, Mr Jones. You can use ‘Sir’ or ‘Miss’ if you have forgotten or unsure of their name.

What to bring with you

As you will be taught in different classrooms, you must take everything with you, and nothing can be left anywhere in the school. You are responsible for your property. We suggest having a large school bag to ensure you can fit everything you need in it. You will need to bring a school bag and packed lunch (if you are having it). PE kit should only be brought into school on days when PE takes place, to avoid you having to carry it when you do not need it. You will need to bring the correct books and equipment every day, arrive promptly, unpack what you need for the lesson, settle down quickly and be ready to work. **We highly recommend you invest in a Casio FX-83GT calculator.**



Homework/ Home learning

Homework is an important part of learning. At Stratton, we use a blend of online resources and physical activities. Teachers will set homework on Teams with clear deadlines, attaching any helpful links or resources. Take pride in your home learning and complete it to the best of your ability. Do not try to do it whilst doing other things. Make sure it is handed in on time.

We ask that you commit to reading daily, from a variety of text types and genres. Your families will support you with this as well.

See: [Homework Summary | Stratton School](#)

Subjects

In year 7, you will be taught the core lessons of English, Maths, Science, and MFL. As well as Performing Arts (Dance, Drama and Music on rotation), History, Geography, PSYC, Design Technology (Woodwork, Graphic design and Food Nutrition on rotation), Art, Physical Education, and Re/ Ethics. You can see what you will be learning in each of these subjects on the curriculum pages of our website

See: [Curriculum Coverage | Stratton School](#)

Tiering and setting decisions are individual to each department. We don't have a whole school policy on ability setting, but as you develop with your studies, and in subjects that offer a Higher and Foundation paper, you will be assessed into the most appropriate pathway.

See: [Internal Assessment | Stratton School](#)

Your Timetable

On your first day at Stratton, you will be issued with a paper copy of your timetable. Keep this safe as you will need this as a reference regularly. The timetable will be structured across a TWO-WEEK model; Week A and Week B. Subjects will usually have an acronym such as EN for English, MA for Mathematics etc. This will also be available on MCAS (our app). You and your family will have log ins issued for this in due course.

In addition, you will be placed in a half of the year group – either X or Y and this will also appear in your timetable alongside a numbered set. E.g. 7X/En1 – will be a group 1 in the X half of the year for English.

If you are unsure of the subject descriptions, please ask your tutor and be sure to use the map so that you can find the classroom which will also be printed on the timetable.



Uniform

The first impression you make is how you look in the Stratton uniform. Always try to be smart in your appearance and wear only the approved items of uniform and not the latest fashion alternative. More information about uniform can be found on our school website. Make sure you have space in your bag for any unworn uniform, as this cannot be left anywhere and must be always carried around with you.



- Your blazer is to be worn at all times when moving around the building. You may of course remove it when sitting in lesson if you are too warm.
- Ties must be worn correctly and to the appropriate length (just touching your waistband)
- Shirts are to be tucked in at all times.
- Jackets and external clothing to be removed once inside the building.
- Black school shoes only to be worn

Our website is very clear on expectations for appearance [School Uniform | Stratton School](#)

Jewellery and Make Up

You may wear a watch to make sure you are not arriving late to lessons. We also allow a pair of plain stud earrings (1 in each ear maximum), and 1 discreet necklace. No other piercings, bracelets or rings are allowed. These will be confiscated if a teacher sees you wearing them, and a letter sent home. If you wear makeup, it must be discreet. Please read the uniform policy for more information.

Mobile Phones/ Smart Devices which connect to the internet

Mobile phones are not welcomed at Stratton. There is no place for them in your lessons and they are not able to be used at break or lunch. If you must have a mobile phone with you for emergencies on your way to and from school, we ask that it is turned off and left in your school bag for the whole school day.

If you have a mobile phone and it is seen or heard by a member of staff, it will be confiscated. On the first occasion, the phone can be collected from Reception at the end of the day. On a second occasion, Parents/carers will be asked to make an appointment to collect your phone and discuss this issue with a senior member of staff. The phone remains in reception until that meeting occurs.

At the time of publication, we are currently reviewing our mobile phone policy. Updates will be provided to all new starters in due course



Stratton School accepts no responsibility for a phone which is lost, stolen or damaged on site. If you need to contact your Parents or Carers during the school day, please speak to the Student Support Assistant in your House office. **Parents are also reminded not to contact you directly via your device, as it will be off and out of sight. All communication is made via the House Office.**

Break and Lunch Arrangements



All food should be eaten in the school cafe or on the benching outside. Food and drink must not be consumed in corridors. Please note, we are a nut free school, so foods that you bring in cannot contain nuts. Stratton School uses a cashless system. Your parents/carers will be issued with a letter, usually via email that allows them to open an account online, where they put money for you to spend on food. You can also pay for school trips too using this same account. This means that you never have to carry cash or worry about forgetting

dinner money. We advise all students to carry a water bottle as water is available at water coolers throughout the school.

Food is available to be purchased at break and lunch. Not all students will be on these sessions at once, so you need to ensure you are aware of which sitting you are on. This also means that you need to remain in the designated eating areas for this period as lessons will be continuing in other parts of the school. Year 11s and 6th Form earn the privilege to eat outside of the school during their lunch sitting.



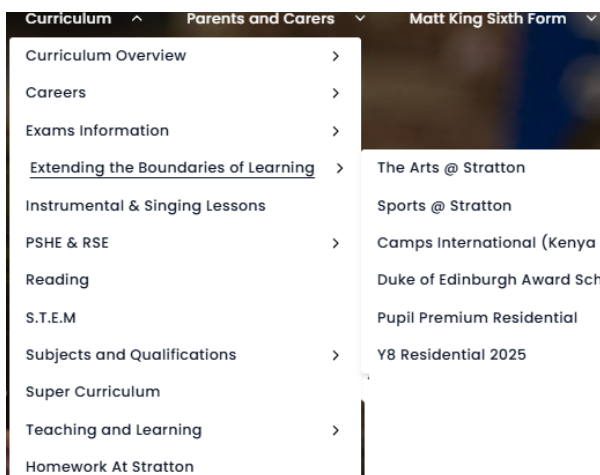
Enrichment



We run lots of trips throughout the year and these are different for each year group. Some trips are local, whilst others, such as the Ski Trip, are a little further afield. We have a partnership with Camps International who are facilitating the Kenya trip in 2026. More information on trips is available on the school website.

Our PLEDGES programme is an award scheme in which students are required to do one of a variety of tasks in each section in their own time. Each student is expected to complete at least one PLEDGE in every Bronze section by the end of year 8 and silver section by the end of year 10. For those who want to progress more quickly there is a Gold PLEDGE award and this will be presented to each successful student by a senior member of the Meridian Trust staff at a special award ceremony.

All our clubs can be found on our website.



Key Dates

National Offer Day – Monday March 2nd 2026

New Family Evening – Tuesday 7th July 5:45pm – 7pm (Sign up email to follow)

SEND Transition Day (by invitation) – Wednesday 8th July

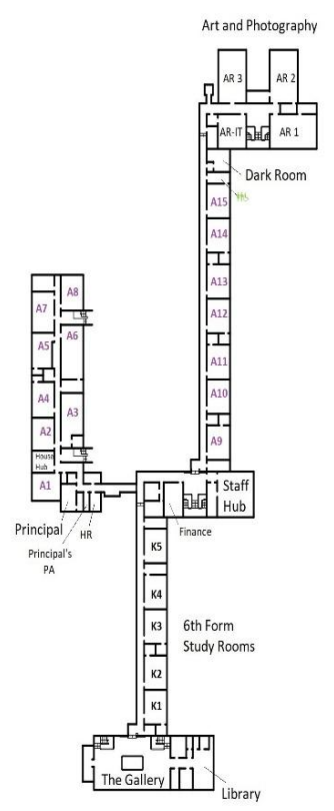
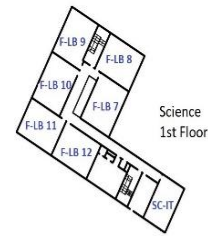
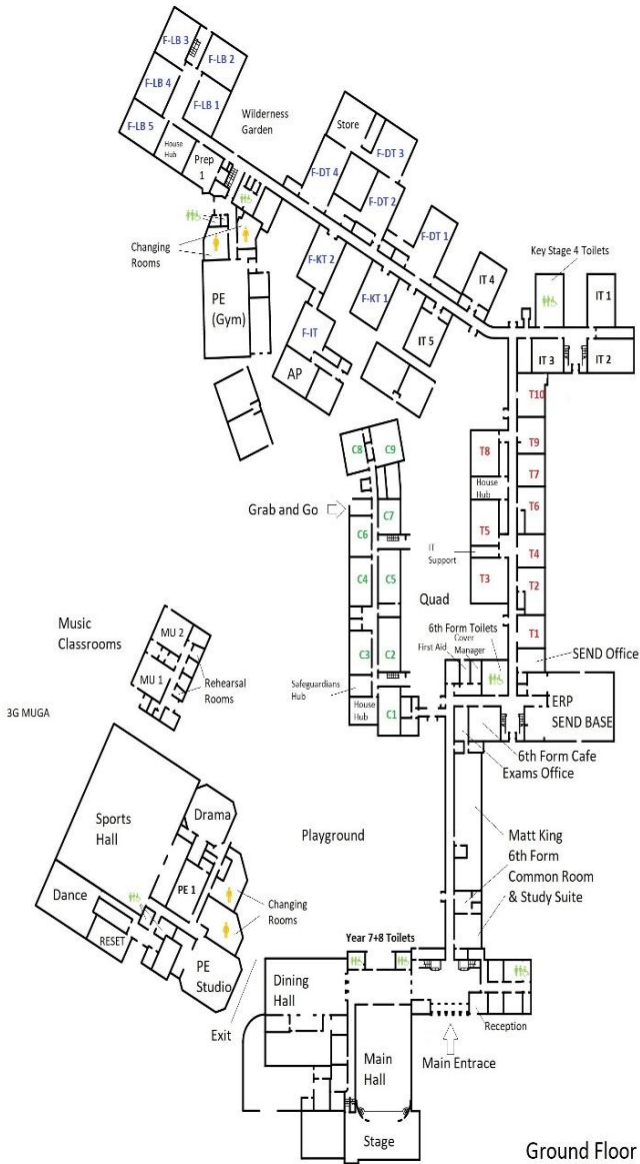
Year 7 Transition Days on site at Stratton (all day) – Thursday 9th and Friday 10th July

Start of Term – Thursday 3rd September 2026

Other opportunities after school are currently being planned and we will update families and students in due course.



School Map



First Floor